



GSA-TEA Srl, distributore di Stampanti per Badge e Leader in Italia per la Costruzione e Progettazione di Tornelli_ Made in Italy

Improvement of Print Speed

Enhanced FINE™ Imaging Technology

300, 600 & 1200dpi Printing Resolution

New Input Hopper

Removable Output Hopper

Support of Transparent Cards

Cartridge type Laminate Film Loading

Support of CR79 Cards

Top-Side Mag. Encoding

All-in-One type Lock System



Endeavor for Perfection

IDP's new SOLID-510 is the next generation of its mid-range ID Card Printer platform. The SOLID-510 inherits the most successful and proven elements of the SOLID-500 series – IDP's longest running ID Card Printer. Enhancements to the SOLID-510 include careful selection of highly reliable parts, the application of a new state-of-the art CPU and application specific features for unique projects. The new SOLID-510 offers an upgrade path from single side printing (510S), to dual side printing (510D), and to dual side printing with lamination (510L). The SOLID-510L also uses IDP's patented Direct Lamination which is the industry's first adoption of direct lamination technology to drastically reduce heat-up time, save energy, and optimize the application of laminate to the card.

Performance - Essence of Card Printer

The core spirit of a card printer is its print quality, print speed and stability. IDP's new SOLID-510 card printer increases print speeds up to by 10%, enhances print quality by optimizing precise ribbon movement, and provides faster processing speed by utilizing a new powerful CPU.

Careful Consideration of User Convenience

From the initial design of the SOLID-510 Series, IDP has taken careful consideration of the end-user to create an easy to use and flexible card printer. The SOLID-510 offers a larger card loading capacity (up to 200 cards), a choice of output direction, new cartridge loading lamination, support of transparent magnetic cards, optional support of CR79 card and an optional all-in-one type lock system are all features of the new SOLID-510.

With a more advanced SOLID-510 from IDP, card issuance will be easier and more productive than ever before.



EASY ISSUANCE

SOLID Applications ensure proper card issuance and data management with SOLID series printers at no extra cost.

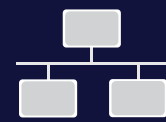
- Design and Print (Images, Photos, Texts, etc.)
- 1D & 2D Barcode printing
- Auto portrait (Auto face detection & adjustment of size & position)
- Card design templates
- Plug-in for supporting external devices
- Convenient issuance of cards and data management
- Magnetic stripe (MS), contact & contactless smart card encoding by using plug-in program



SECURITY

SOLID series provides effective security features for access control and data encryption.

- SOLID series has a password verification function to provide administrator and user authentications.
- SOLID series can set a specific authorized PC for encoding and printing cards.
- SOLID series can encrypt data transmitted on USB and can support SSL (Secure Socket Layer) protocol on ethernet communications.



NETWORKING

SOLID series can utilize the network printer server for encoding and printing cards.

- SOLID Ethernet module can not only print cards but also encode MS, contact and contactless smart card through the network.
- SOLID Ethernet module has OCP(Open Card Print) protocol which can encode and print cards by using commands on multiple platforms without installing the printer driver.
- Available encoding the contact & contactless smart card by Ethernet.

FEATURES

- **New Input Hopper**

200 cards with cover open | 100 cards in default



- **Single Card Feeder (*Option)**

- **Removable - Output Hopper**



- Improvement of Print speed
- Enhanced FINE™ Imaging Technology
- State-of-the-art CPU
- Reduced Printing Noise
- All-in-one Lock system (*Option)
- Easy to Handle Laminate Film Cartridge

- **Rear-side Stacker**
(up to 100 cards, *Option)



- **Front-side Mag Encoding (*Option)**
- **Support of Transparent Card**
- **Support CR79 Type (Factory-installed, *Option)**

SPECIFICATIONS

Model		SOLID-510S	SOLID-510D	SOLID-510L
Printing	Print Type	Dye-Sublimation		
	Resolution	300dpi (Color & Mono), 600 & 1200dpi (Mono only) / Edge to Edge		
	Dual Side Printing	Option (with Flipper)	Yes	Yes (Flipper Installed)
Card	Card Feeding	Automatic		
	Card Size & Thickness	ISO CR80 or ISO CR79 (Option-Factory installed) 0.38mm (15mil) ~ 1.0mm (40mil)		
	Card Type	PVC, PET, Composite PVC		
Print Speed	Monochrome	5 sec./card (720 cards/hour)		
	YMCKO	Front-in & Front-out	Max. 17 sec./card (212 cards/hour)	
		Front-in & Back-out	Max. 16 sec./card (225 cards/hour, Simultaneous)	
	YMCKOK	-	Max. 22 sec./card (164 cards/hour)	
Laminating Speed	Simultaneous (Single Lamination)	YMCK	-	22 sec./card
		YMCKK	-	32 sec./card
	One by One (Single Lamination)	YMCK	-	43 sec./card
		YMCKK	-	53 sec./card
Capacity	Input Hopper	100 Cards / 200 Cards with cover open		
	Output Hopper	Front : 40 Cards / Back : 100 Cards (Optional Back-side Stacker)		
System	Display & Control Panel	2 Line LCD / 2 LED Buttons		
	Supported Platforms	Microsoft Windows 7 / 8 / 10, Mac OS, Linux		
	Communication	USB / Ethernet, WiFi (Option)		
	Power Supply	DC 24V		
	Power Consumption	48	48	96
	Temperature/Humidity	15~35°C / 35~70%		
Security	Physical Lock	Input Hopper & Ribbon (Option) / Laminate Film (Option)		
	Kensington Lock	Option		
Dimensions	WxLxH (Millimeter / Inch)	165 x 390 x 210 / 6.5 x 15.4 x 8.3	165 x 498 x 210 / 6.5 x 19.6 x 8.3	165 x 675 x 210 / 6.5 x 26.6 x 8.3
	Kg/lbs	4.5 / 10	5.2 / 11.5	8.8 / 19.4
Encoding Option	Magnetic	ISO 7811 (Track I, II, III Read/ Write, HiCo/ LoCo), JIS II		
	Contact	ISO 7816 (ID-1)		
	Contactless	MIFARE, ISO 14443 (Type A/ B), ISO 15693, DESFIRE, iCLASS		

CONSUMABLES

COLOR RIBBONS

Model	Capacity	Description
YMCKO	250 Cards/Roll	Full Color Ribbon with Resin Black & Overlay
YMCKOK	200 Cards/Roll	Full Color Ribbon with Resin Black, Overlay & Black for Back Side
YMCFKO	200 Cards/Roll	Full Color Ribbon with UV Panel, Resin Black and Overlay
HYMCKO	350 Cards/Roll	Half Panel Size Color Ribbon with Resin Black and Overlay
3YMCKO	400 Cards/Roll	1/3 Panel Size Color Ribbon with Resin Black and Overlay

MONO RIBBONS

Model	Capacity	Description
KO	600 Cards/Roll	Black with Overlay
K	1200 Cards/Roll	Black
W	1200 Cards/Roll	White
B	1200 Cards/Roll	Blue
R	1200 Cards/Roll	Red
MG	1200 Cards/Roll	Metallic Gold
MS	1200 Cards/Roll	Metallic Silver
SO	1200 Cards/Roll	Scratch-Off

SECURITY FILMS

Model	Capacity	Description
HPF	250 Cards/Roll	Hologram Patch Film
CPF	250 Cards/Roll	Clear Patch Film

IDP Corp., Ltd.

#601, 50, Digital-ro 33-gil,
Guro-gu, Seoul, Korea, 08377
T +82-2-6099-3700 **F** +82-2-6099-3717
E sales@idp-corp.com

IDP Americas, Inc.

200 Circuit Drive, North Kingstown, RI 02852 U.S.A
T +1-401-400-7111 **F** +1-401-667-7445
E sales.na@idpnorthamerica.com

IDP Middle East

13F, Jafza View 18, Downtown
Jebel Ali P.O.Box 17588, Dubai U.A.E.
T +971-4-889-5900
E manupark@idp-corp.com

